

[Home](#)[PCLD Research Team](#)[Summary for clinicians](#)[Discovery of PRKCSH](#)[Information for Patients](#)[Clinical Studies](#)[Dutch monography](#)[Questionnaire \(Dutch\)](#)[Clinical Studies \(Dutch\)](#)[Press reports \(Dutch\)](#)[Mutation database](#)[PRKCSH mutations](#)[PRKCSH polymorphism](#)[SEC63 mutations](#)[SEC63 polymorphism](#)[Molecular diagnosis](#)[Treatment of cysts](#)[Publications](#)[Link out](#)[Disclaimer](#)

POLYCYSTIC LIVER DISEASE

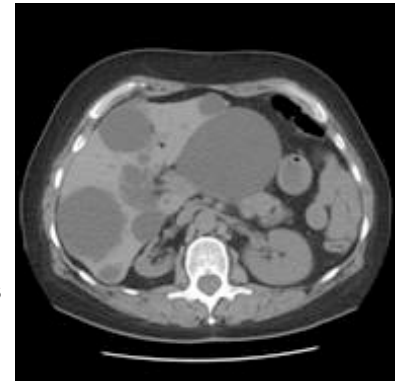
Welcome to our website focused on basic and clinical research of "Autosomal dominant polycystic liver disease (PCLD)" . ([MIM 174050](#))

PCLD is a relatively recent recognized genetic disorder characterized by the appearance of numerous cysts spread throughout the liver.

This website introduces you to various clinical and research aspects of PCLD and to the scientists who perform research into PCLD in Nijmegen, The Netherlands

Our Laboratory of Gastroenterology and Hepatology performs out research in various areas of gastrointestinal diseases in general and PCLD in particular. We use a combined clinical approach with basic molecular biological and genetic techniques

If you have questions with respect to this website and/or our research please contact us at info@livercyst.org



Computer tomography scan showing multiple liver cysts in PCLD.

Our address:
 Radboud University Nijmegen Medical Center
 Laboratory of Gastroenterology & Hepatology
 Huispost 547
 Geert Grooteplein zuid 8
 P.O. Box 9101, 547 MDL, Nijmegen, The Netherlands
 Tel +31 24 3614760; Fax +1 24 3540103
info@livercyst.org

Launched on April 27th, 2005
 Last update June 1th, 2005

3624

Update 5